

AGENDA

Meeting: SOUTHERN WILTSHIRE AREA BOARD
Place: Winterslow Village Hall, Middleton Road, Winterslow, SP5 1PQ
Date: Thursday 15 April 2010
Time: 7.00 pm

Including the Parishes of Alderbury, Britford, Clarendon Park, Coombe Bissett, Downton, Firsdown, Grimstead, Landford, Laverstock, Ford and Old Sarum, Odstock, Pitton and Farley, Redlynch, West Dean, Whiteparish, Winterslow.

The Area Board welcomes and invites contributions from members of the public. The chairman will try to ensure that everyone who wishes to speak will have the opportunity to do so.

If you have any requirements that would make your attendance at the meeting easier, please contact your Democratic Services Officer.

Refreshments and networking opportunities will be available from 6:30pm.

Please direct any enquiries on this Agenda to Lisa Moore (Democratic Services Officer), on 01722 434560 or email lisa.moore@wiltshire.gov.uk

or Tom Bray (Southern Wiltshire Community Area Manager), Tel: 01722 434252 or (email) tom.bray@wiltshire.gov.uk

All the papers connected with this meeting are available on the Council's website at www.wiltshire.gov.uk

Press enquiries to Communications on direct lines (01225) 713114 / 713115.

Wiltshire Councillors

Richard Britton - **(Chairman)**

Chris Devine

Julian Johnson

Ian McLennan

Leo Randall – **(Vice-Chairman)**

Alderbury and Whiteparish

Winterslow

Downton and Ebble Valley

Laverstock, Ford and Old Sarum

Redlynch and Landford

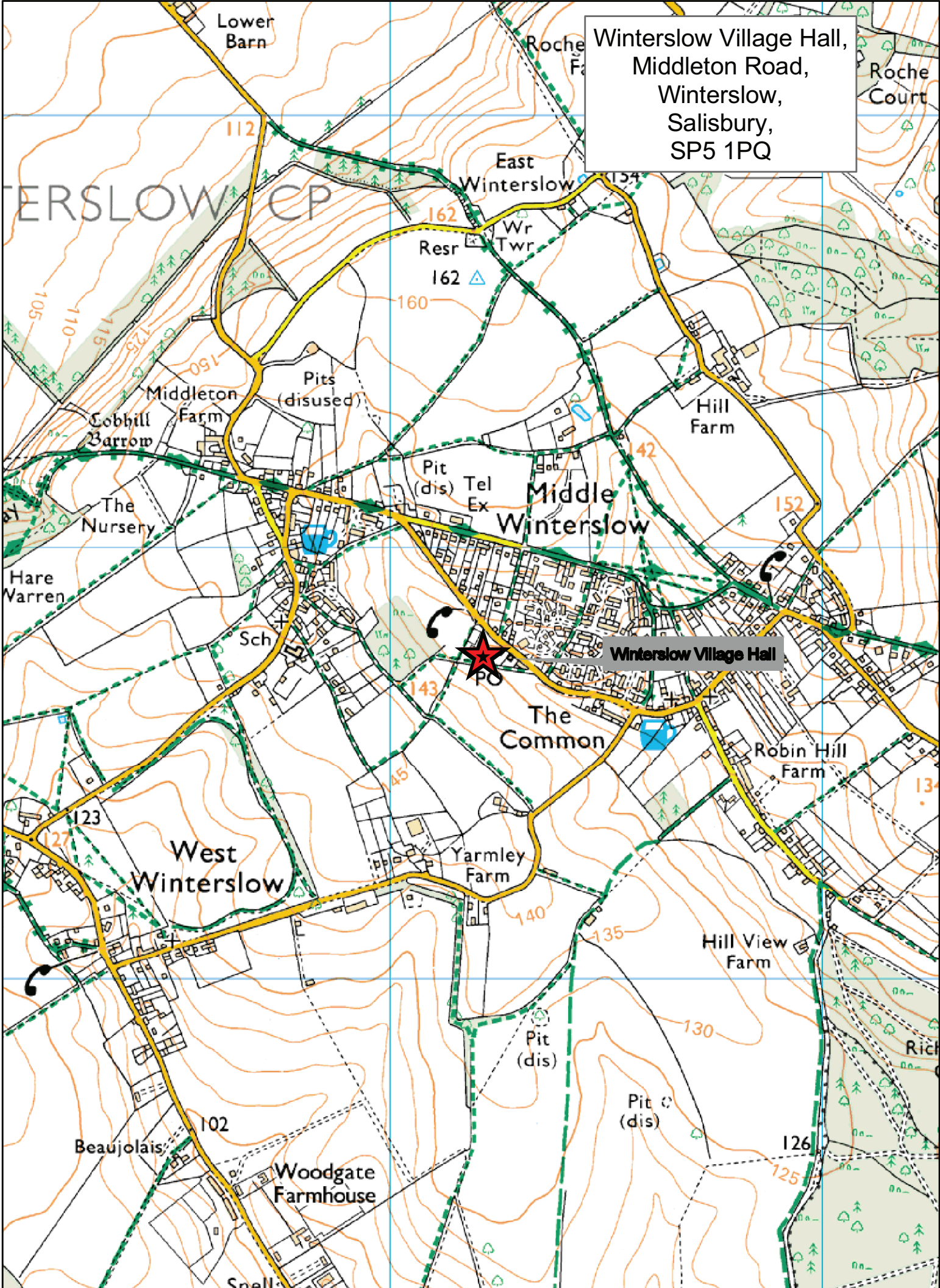
Map enclosed at page 1

Items to be considered	Time
<p>1. Welcome and Introductions</p> <p>2. Chairman's Announcements (<i>Pages 3 - 10</i>)</p> <p>And to note the following briefing papers (attached):</p> <ul style="list-style-type: none"> • Gypsy and Traveller Sites • Special Educational Needs (SEN) • Contaminated Land Strategy for Wiltshire • Air Quality Strategy for Wiltshire <p>3. Apologies</p> <p>4. Declarations of Interest</p> <p>Councillors are requested to declare any personal or prejudicial interests or dispensations granted by the Standards Committee.</p> <p>5. Minutes (<i>Pages 11 - 24</i>)</p> <p>To confirm the minutes of the last ordinary meeting held on 4 February 2010 and the extraordinary meeting held on 15 March 2010 (copies attached).</p>	<p>7.00pm</p>
<p>6. Health Issues (<i>Pages 25 - 40</i>)</p> <ul style="list-style-type: none"> a) Feedback from the Health Fair held on 11 March 2010, including an interactive quiz using new handheld voting technology and a discussion on the health statistics for the community area (Joint Strategic Needs Assessment attached). b) First Responder Schemes – Tony Barron, Chairman of NHS Wiltshire to discuss the importance of First Responder schemes and their future development in the area. 	<p>7.05pm</p>
<p>7. Neighbourhood Watch in our Community Area</p> <p>To receive a presentation on Reinvigorating Neighbourhood Watch Schemes in our community area.</p>	<p>7.40pm</p>
<p>8. Street Light Switching off/Dimming at Night across the Community Area</p> <p>To receive a verbal update from the Chairman on the County wide approach to street light switching off/dimming at night.</p>	<p>8.00pm</p>

9.	<p>Rural Transport</p> <p>The Board is aware that there are several problems facing the community area regarding Rural Transport; three key issues being:</p> <ul style="list-style-type: none"> • Transport issues relating to access to activities in the evening and at the weekend for young people. • Transport issues relating to access to amenities and leisure, particularly in the daytime for the elderly and isolated. • Issues in relation to school traffic in specific locations. <p>Round table discussions seeking solutions to these problems will be held and feedback sought.</p>	8.05pm
10.	<p>Community Plan Steering Group</p> <p>To receive an update from the Community Plan Steering Group.</p>	8.20pm
11.	<p>Your Local Issues (<i>Pages 41 - 42</i>)</p> <p>To receive an update from Tom Bray, Community Area Manager (report attached).</p>	8.30pm
12.	<p>Community Grants (<i>Pages 43 - 48</i>)</p> <p>The Board will consider grant applications received for funding from the Community Grants Scheme (report attached).</p>	8.35pm
13.	<p>Future Meeting Dates, Evaluation and Close. (<i>Pages 49 - 50</i>)</p> <p>To note the Forward Plan (copy attached).</p>	9.00pm

<p>Future Meeting Dates</p> <p>Thursday, 17 June 2010 7.00pm Coombe Bissett Village Hall</p> <p>Thursday, 19 August 2010 7.00pm Alderbury Village Hall</p> <p>Thursday, 14 October 2010 7.00pm Pitton Village Hall</p>

Winterslow Village Hall,
Middleton Road,
Winterslow,
Salisbury,
SP5 1PQ



Reproduced from Ordnance Survey mapping with permission of the controller of her majesty's stationary office ©Crown Copyright
Unauthorised reproduction infringes copyright and may lead to prosecution or civil proceedings. Wiltshire Council 100049050 2010



Chairman's Announcement: Consultation on Gypsy and Traveller Issues

Item No.02

Wiltshire Council is preparing a plan that will identify land for gypsy and traveller sites and include a policy for assessing the suitability of other sites the Council is asked to consider through the planning application process.

The Council has a responsibility to plan for the housing needs of everyone in the Wiltshire community. This doesn't just mean providing a range of types and sizes of houses available to rent or to buy. There is also a responsibility to plan for the accommodation needs of gypsies, travellers and travelling show people.

The number of gypsies and travellers in Wiltshire has been increasing in recent years. The consequence of not addressing this growing accommodation need could be increased tension between the settled and travelling community and discrimination towards the gypsy and traveller community.

An 8 week consultation on the issues and general approach to identifying land for new gypsy, traveller and showpeople sites is to start on Tuesday 6th April and continue until 5pm on Friday 4th June 2010. This is the first stage in the process of preparing a Gypsy & Traveller Site Allocations Development Plan Document.

The purpose of the consultation is to:

- Discuss the ISSUES around providing new sites.
- Develop a METHOD for assessing what is a good location for new sites.
- Invite LAND to be put forward to be considered as possible new sites.

All information relating to the consultation will be available from the end of March on the planning policy pages of the Council's web site (www.wiltshire.gov.uk), in the main Council offices in Chippenham, Devizes, Salisbury and Trowbridge and available at local libraries.

If you would like to discuss the issues involved in this consultation in more detail drop in events are being held at the following locations between 4pm and 8pm:

- Neald Hall, Chippenham - Wednesday 5th May 2010
- Wessex Room, Corn Exchange, Devizes - Tuesday 11th May 2010
- Salisbury - Thursday 13th May 2010

Chairman's Announcement:
Consultation on the Review of Special Educational Needs Provision

Item No.02

Over recent months Wiltshire Council officers have worked with schools, parent representatives and other people to review Special Educational Needs (SEN) provision in the county.

The review relates to the whole of Wiltshire. It is not a cost cutting exercise, the purpose is to more effectively use available resources. The review considers:

- special school provision
- specialist provision that is part of mainstream primary and secondary schools
- SEN support services for schools

A document has been written that sets out what the review has shown and what the Council would like to do in the future. This will now be shared with a wide range of people who are invited to respond to say what they think about what the Council's proposals. The publication date is late February 2010. Those being contacted include: parents and carers of children with special educational needs, schools, Diocesan authorities, other Local Authorities, and Trade Unions. As soon as the document becomes available it is also being circulated to Parish Councils, through the Area Boards network, and it will also be available on the Wiltshire Council website.

Any questions about the proposals or the consultation process can be sent in the first instance to Tracy Gates, SEN Project Officer, tracygates@wiltshire.gov.uk 01225 756170.

There are opportunities available to meet with officers to discuss the proposals:

- Devizes School, Devizes Monday 29 March 7pm
- Sheldon School, Chippenham Wednesday 21 April 7pm
- Kingdown School, Warminster Thursday 22 April 7pm
- Salisbury City Hall, Salisbury Tuesday 4 May 7pm
- St.John's Parish Church Centre, Trowbridge Friday 7 May 10am.

(The evening meetings are preceded by meetings for school staff and school governors.)

The closing date for the consultation is 12 noon Monday 24 May 2010. The content of the consultation responses will be made available to the Elected Members of Wiltshire Council who will make decisions in relation to the proposals.

Most of the proposals that may be subsequently agreed by Elected Members are designed to come into effect from September 2011. An individual plan will be put in place for any individual child or young person affected by any changes.

Southern Wiltshire Area Board 15 April 2010

Chairman's Announcements

Contaminated Land Strategy for Wiltshire

Under the terms of the Environment Act 1995 the Council is obliged to develop and adopt a formal strategy that details how it proposes to deal with historic land contamination. The Contaminated Land Strategy for Wiltshire document unites the work previously carried out by the four district councils in one policy document.

The legislation requires Wiltshire Council to survey the district for potentially contaminated land (for example gas works, landfills and industrial or commercial uses) and it applies equally to land that was contaminated before the Act, as well as new contamination.

Consultation on the document remains open until 10 May 2010. If you would like to contribute your views by email or in writing, please contact your Democratic Services Officer, Lisa Moore, for how to do this.

Email: publicprotectionnorth@wiltshire.gov.uk

Written Address:

Specialist Environmental Protection Team

Public Protection Services

Monkton Park

Chippenham

Wiltshire

SN15 1ER

Southern Wiltshire Area Board 15 April 2010

Chairman's Announcements

Air Quality Strategy for Wiltshire

The Environment Act 1995 places a duty on local authorities to monitor air quality within their areas having regard to national and European air quality objectives.

Wiltshire is a high quality environment, however we have a number of locations where air quality objectives are not being met. These failures are in general associated with vehicle emissions and congestion and have health implications.

We would welcome your views on the Air Quality Strategy, which has been developed as an over arching document detailing our approach to air quality. Consultation on the document remains open until 18 June 2010. If you would like to contribute your views, please contact your Democratic Services Officer, Lisa Moore, for how to do this.

Consultation Portal Link:

<http://www.wiltshire.gov.uk/environmentandplanning/publicprotection/pollutionandnoise/airandwaterpollution/airquality/airqualityreportsandsummaries.htm>

MINUTES

Item No. 05

Meeting: SOUTHERN WILTSHIRE AREA BOARD
Place: Trafalgar School, Breamore Road, Downton, SP5 3HN
Date: 4 February 2010
Start Time: 7.00 pm
Finish Time: 8.50 pm

Please direct any enquiries on these minutes to:

Lisa Moore (Democratic Services Officer), Tel: 01722 434560

or (e-mail) lisa.moore@wiltshire.gov.uk

Papers available on the Council's website at www.wiltshire.gov.uk

In Attendance:

Wiltshire Councillors

Cllr Richard Britton (Chairman), Cllr Leo Randall (Vice-Chairman), Cllr Ian McLennan, Cllr Christopher Devine and Cllr Julian Johnson

Cllr Dick Tonge (Cabinet Member for Highways and Transport)

Wiltshire Council Officers

Tom Bray, Community Area Manager (CAM)
Lisa Moore, Democratic Services Officer
Tracy Carter, Service Director
Tim Martienssen, Regeneration Manager

Town and Parish Councillors

Alderbury PC – D Biggs and S Ingram
Britford PC – M Hitchings
Downton PC – J Brown, R Chandler, B Cornish, C Hall, S Lacey, J Launchbury, P Watts, J Whitmarsh, and N Wilson
Firsdown PC – B Edgeley
Landford PC – T Reynolds
Laverstock, Ford and Old Sarum PC – R Champion, V McLennan
Odstock PC – R Poynting
Pitton and Farley PC – C Purves and A Shaw
West Dean PC – A Impey

Whiteparish PC – T King
Winterslow PC – D Newton

Partners

Wiltshire Police – Inspector David McMullin
Wiltshire Fire and rescue Service – Mike Franklin

Members of Public in Attendance: 17

Total in attendance: 51

<u>Agenda Item No.</u>	<u>Summary of Issues Discussed and Decision</u>	<u>Action By</u>
1.	<u>Welcome</u> The Chairman, Councillor Richard Britton, welcomed everyone to the Southern Wiltshire Area Board Meeting and introduced Councillor Dick Tonge (Cabinet Member for Highways), and Tracy Carter (Service Director for Operations).	
2.	<u>Apologies for Absence</u> Apologies were received from Ian Rennie – Wiltshire Fire and Rescue, and Jo Howes – NHS Wiltshire.	
3.	<u>Declarations of Interest</u> There were none.	
4.	<u>Minutes</u> <u>Decision</u> That the minutes of the meeting held on 17 December 2009 be approved as a correct record and signed by the Chairman.	Lisa Moore
5.	<u>Focus on Speeding in the Community Area</u> a) <u>Speed Limit Review</u> Councillor Dick Tonge explained the background to the Speed Limit Review. Some of the points raised were: <ul style="list-style-type: none"> • In August 2006 the Department of Transport (DoT) issued new guidance to Highways Authorities regarding the setting of speed limits. • All Highways Authorities were requested to complete an assessment of existing speed limits on A and B Class roads, in line with revised guidance, and implement any amendments arising from this process by 2011. • A review had been carried out and a set of recommendations had been compiled, and distributed in the form of a CD to all Parish Councils for consultation. • All comments and suggestions received during consultation would be taken into consideration. • Any suggestion which Wiltshire Council felt was contentious would be discussed with the Parish Council who had raised it. • Consultation ends 5 February 2010. 	

Some points and questions raised from those present were:

- Some Parishes were not supportive of the recommendations set out in the report, and asked what criteria had been used to arrive at them.
- The criteria used had been set out by Government.
- There was some concern over a lack of communication with other Authorities along Wiltshire Council's borders.
- In some instances where local conditions went against the Government recommendations, local knowledge/comments would need to be given consideration.
- The Review would consider all suggestions and comments submitted by Parishes, any disputed issues would be discussed with the Parish concerned.

Councillor Tonge also spoke about the recent weather conditions where Wiltshire had experienced heavy snow and ice causing complications on roads and to services such as schools. He gave an update on how Wiltshire Council had set about relieving the situation. Some points covered were:

- Every effort was made where possible to ensure that carers, medicine and food was accessible for the elderly and vulnerable.
- Grit Trucks had driven in front of some ambulances on stretches of road where ice had caused incidents.
- Schools where exams were being held had been kept open.
- Gritting had been prioritised to A and B, and to some C Class roads. After they had been cleared, the grit trucks had started on the smaller roads.
- Pre-ordered salt from Cheshire had been diverted by the Government during the shortages in January, but the pre-ordered salt from Spain had arrived, preventing stocks from running out in Wiltshire.
- In some areas it was established that grit bins were being raided for private resale, soon after they had been replenished.
- Wiltshire Council would approach all Parish Councils in April 2010 to explain what processes had taken place during the winter, and to ask what could be changed to improve the situation next time.

The Chairman thanked Councillor Tonge for attending the meeting, and urged any Parish who had not yet replied to the Speed Limit consultation, to do so.

b) Community Speed Watch

Community Speed Watch (CSW) Co-ordinator Elizabeth Ngero gave an overview on the scheme. Points covered were:

- A potential speeding issue should be first raised with the local Area Board by completing a *community issue sheet* (online: www.wiltshire.gov.uk/areaboards).
- Requests would be prioritised and the Camera Safety Unit asked to assess each proposal to test the speed of vehicles and make sure they were suitable and safe for CSW.
- If CSW was a suitable approach, the CSW coordinator (working in the Camera Safety Unit) would liaise with the Local Beat Manager, Roads Policing Officers and the local community to organise training for the volunteers.
- All sites would be checked for safety and risks and the scheme could only be conducted at these specified sites.
- Once the training had been completed, the CSW Volunteers would carry out speed monitoring on specified roads in their community. All volunteers agree to work within a 'Code of Practice' which ensured a consistent approach for all of the schemes and the motoring public.
- The CSW Volunteers would then record the registration numbers of vehicles exceeding the local speed limit. This information would be passed to the CSW Coordinator and a letter would be sent from the Police warning the registered keeper of the vehicle. If certain vehicles were found to be persistently offending they would be targeted by the Police with a view to issuing a Fixed Penalty Notice or to instigate court proceedings.
- Where the recorded results showed a persistent speed issue the CSW Coordinator may recommend to the Wiltshire and Swindon Road Safety Partnership that additional investigation be undertaken and temporary speed indicator devices or similar variable message signs may be deployed periodically at the site. If this were to show a significant ongoing problem Wiltshire Council's highways department would assess whether further engineering or traffic management measures may be appropriate.

For more information on Community Speed Watch, and how to get involved in a scheme in your area, please contact Tom Bray on 01722 434252 or tom.bray@wiltshire.gov.uk

6.	<p><u>Rural Broadband</u></p> <p>Tim Martienssen (Regeneration Manager) gave an update on the Rural Broadband Review. Some of the aims of the project were to:</p> <ul style="list-style-type: none"> • Provide a comprehensive picture of broadband speeds throughout the county • Map existing infrastructure which currently delivered broadband, or which could potentially be upgraded to improve broadband delivery • Provide a database to permit Wiltshire Council to effectively deliver its own programmes, and for the council and local partners to lobby government, and other groups and providers to continually improve broadband provision throughout the county. <p>At present there was a lack of understanding about the exact extent of broadband supply problems but also very little information on the level of demand from consumers.</p> <p>The author of the review had recently launched a Broadband Speed check questionnaire on the website where people could measure and submit their broadband speed. This was vital evidence in getting a broader picture with regard to supply problems in the rural areas.</p> <p>The tool questionnaire can be found here: http://www.wiltshire.gov.uk/onlinebroadbandspeedcheck.htm. The closing date for reporting your broadband speed is 31 March 2010.</p> <p>Further to this, anecdotal evidence of poor coverage would be welcomed in order to help Wiltshire Council understand more about the problem in hand.</p> <p>To report specific evidence please raise an issue on the issue system or write to the Community Area Manger.</p>	
7.	<p><u>Update from Community Plan Steering Group</u></p> <p>Tony Reynolds Chairman of the Community Plan Steering Group, gave an update to the Board, and informed them that the inaugural meeting on 18 January 2010 had been well attended by local organisations and Parish Councils. Attendees had been asked to consider a number of issues:</p> <ul style="list-style-type: none"> • Whether part of the content of the existing Community Plan could be retained and used within the new document. 	

	<ul style="list-style-type: none"> • The level of involvement people were willing to contribute to the Steering Group. • The costings for the year, for meetings and paperwork etc. • Proposed meeting dates with an aim of producing a new draft Community Plan by 31 December 2010. <p>A skeleton document had been sent out to Parishes and organisations for consultation, with a deadline for comments of Sunday 28 February 2010.</p> <p>On 4 March 2010, Tony Reynolds, Mick Brown (Vice Chairman of Steering Group), and Tom Bray would meet to collate the feedback from the consultation, and to produce a draft review version of the Community Plan, in preparation for the next meeting of the Group on 16 March 2010, at 7.00pm in the Methodist Church Hall, Salisbury.</p> <p>All interested parties were invited to attend. For further details please contact Tom Bray 01722 434252 or tom.bray@wiltshire.gov.uk</p>	
8.	<p><u>Community Issues Updates</u></p> <p>Tom Bray (Community Area Manager) gave an update on the progress of some Issues since the previous meeting, these were:</p> <ul style="list-style-type: none"> • School traffic at peak times in Laverstock. • Dangerous parking at the junction in Morgans Vale. • School Transport at Pitton Primary School. • Delay to building works at the School at Old Sarum. <p>Councillor Ian McLennan circulated a report and gave an update on the issue of school traffic in Laverstock, which incorporated a ten point plan of action. He asked the Board to support the plan.</p> <p>People were reminded that the Issue system was a good way to get their voices heard, and ensured that issues were documented and easily directed to the correct service providers.</p> <p>The issues sheet is available on line at: https://forms.wiltshire.gov.uk/area_board/report_issue.php?area_board=Southern%20Wiltshire</p> <p><u>Decision</u> That the Area Board would support the school traffic element of the ten point plan of action, as outlined below, produced by Councillor McLennan.</p>	Tom Bray

	<p><u>The ten points from Councillor McLennan's Plan were:</u></p> <ol style="list-style-type: none"> 1. Investigate other councils' solutions to preventing access to localities where Schools are present. 2. Investigate how a 'No Stopping order' is enacted. 3. Reconnoitre the London Road Park & Ride site to determine the feasibility of new pedestrian/cycle exit and Drop off/Pick up zone. 4. Investigate 20 MPH school zone feasibility. 5. Additional/Enhanced crossing points feasibility. 6. Explore Residents/Schools/WC officers/Police enforcement capabilities. 7. Detailed fact finding of existing bus pass scheme to determine whether money saved could be transferred to fund yellow Bus routes. 8. Yellow Bus exploration in general. 9. Investigate other transport possibilities from Park and Ride to Road Train/cycles. 10. Gather evidence & concerns from all partners including parents. 	
9.	<p><u>Community Area Grants</u></p> <p>The Board considered seven applications for funding from the Community Area Grant Scheme, and one request for the funding of operational costs from the Community Plan Steering Group.</p> <p><u>Decision</u> Winterslow First Responders were awarded £1,534 towards their project to purchase equipment.</p> <p><u>Reason</u> <i>The application met the Community Area Grant Criteria for 2009/10 and would benefit the local community.</i></p>	Tom Bray

Decision

Winterslow Youth Club (Barry's Fields Sports Ground) were awarded £3,850 towards their project to purchase play equipment.

Reason

The application met the Community Area Grant Criteria for 2009/10 and would benefit the local community.

Decision

That the application from Odstock and Nunton Parochial Church Council be refused.

Reason

Due to lack of wider community benefit.

Decision

River Bourne Community Farm was awarded £2,300 towards their project.

Reason

The application met the Community Area Grant Criteria for 2009/10 and would benefit the local community.

Decision

Odstock Parish Council were awarded £3,000 towards the kitchen refurbishment project for the recreation field pavilion.

Reason

The application met the Community Area Grant Criteria for 2009/10 and would benefit the local community.

Decision

That the application from Salisbury International Arts Festival be refused.

Reason

Further information on project consultation with the relevant stakeholders (ie Parish Council, residents and landowners) was required to satisfy the Board that the project would be a good use of the Community Grant funding.

Decision

Southern Wiltshire Development Centre for Young People was awarded £5,000 towards their Leisure Credit project.

Reason

The application met the Community Area Grant Criteria for 2009/10 and would provide an opportunity for young people to be a part of the community by give something back and in turn receive credits for activities.

Decision

Southern Wiltshire Community Plan Steering Group was

	<p>awarded £100 of funding to cover the cost of two meetings, scheduled to take place before 31 March 2010.</p> <p><u>Reason</u> <i>To support the running costs of the Community Plan Steering Group.</i></p>	
10.	<p><u>Future Meeting Dates, Evaluation and Close.</u></p> <p>The Chairman informed those present that some funds were still available for small grants, and urged anyone who wished to apply to do so before 23 February 2010.</p> <p>Grant applications are available on line by following the link below: http://www.wiltshire.gov.uk/communityandliving/areaboards/areaboardscommunitygrantsscheme.htm</p> <p>or by contacting Tom Bray on 01722 434252 tom.bray@wiltshire.gov.uk</p> <p><u>Future Meeting Dates:</u></p> <p>Health Fair - Thursday 11 March 2010, 3.00 – 6.30pm</p> <p><u>Area Board Meetings</u></p> <p>Extraordinary Meeting - Monday 15 March 2010, 4.30pm at The Methodist Church Hall, Salisbury</p> <p>Thursday 15 April 2010, 7.00pm at Winterslow Village Hall Thursday 17 June 2010, 7.00pm at Coombe Bissett Village Hall Thursday 19 August 2010, 7.00pm at Alderbury Village Hall</p>	

MINUTES

Item No. 05

Extraordinary Meeting of: SOUTHERN WILTSHIRE AREA BOARD

Place: Methodist Church Hall, St Edmunds Church Street, Salisbury,
SP1 1EF

Date: 15 March 2010

Start Time: 4.30 pm

Finish Time: 5.50 pm

Please direct any enquiries on these minutes to:

Lisa Moore (Democratic Services Officer), Tel: 01722 434560

or (e-mail) lisa.moore@wiltshire.gov.uk

Papers available on the Council's website at www.wiltshire.gov.uk

In Attendance:

Wiltshire Councillors

Cllr Richard Britton (Chairman), Cllr Leo Randall (Vice Chairman), Cllr Ian McLennan,
Cllr Christopher Devine and Cllr Julian Johnson

Wiltshire Council Officers

Tom Bray, Community Area Manager (CAM)
Lisa Moore, Democratic Services Officer

Parish Councillors and Grant Applicants

Clearway – K Dean and K Ward
Downton Football Club – J Blake
Downton Moot – S Barnhurst - Davis
Downton PC – J Brown, B Cornish, C Hall, A Ireland, S Lacey and J Whitmarsh
Ebble Valley Short Mat Bowls Club – D Germaines
Pitton & Farley PC – D Balfour and A Shaw

Cllr W Moss in attendance for part of the meeting.

Total in attendance: 22

<u>Agenda Item No.</u>	<u>Summary of Issues Discussed and Decision</u>	<u>Action By</u>
1.	<p><u>Welcome and Introductions</u></p> <p>The Chairman, Councillor Richard Britton, welcomed everyone to the extraordinary meeting of the Southern Wiltshire Area Board.</p> <p>He explained that the extraordinary meeting had been scheduled in order to allow the Board to consider an additional tranche of grant applications for funding from the Community Area Grant Scheme, before the end of the financial year.</p> <p>Since the scheduling of the meeting, Cabinet had agreed that all Area Boards be permitted to roll-over any monies they had not spent during the available time from the 2009/10 budget into the 2010/11 budget. This would apply in respect of 2010/11 only and would be reviewed in subsequent years.</p>	
2.	<p><u>Apologies</u></p> <p>There were none.</p>	
3.	<p><u>Declarations of Interest</u></p> <p>Councillor Leo Randall declared a personal and prejudicial interest in item 4 – grant application from Whiteparish Memorial Ground Trust, as he was a trustee. Councillor Randall left the room and did not vote for this item.</p>	
4.	<p><u>Community Grants</u></p> <p>The Board considered nine applications for funding from the Community Grant Scheme. Applicants in attendance were invited to speak in support of their application. The ward councillor for the area in which the project would take place also spoke, after discussion the Board voted on each application.</p> <p><u>Decision</u> Pitton and Farley Parish Council were awarded £615 towards their project to purchase new children’s play equipment.</p> <p><u>Reason</u> <i>The application met the Community Area Grant Criteria for 2009/10 and would be of benefit to the children from the area.</i></p> <p><u>Decision</u> Morgan’s Vale and Woodfalls Primary School were awarded £215 towards their project to purchase water butts, with the</p>	Tom Bray

following condition:

that the shortfall of £215 be match funded by the School, to enable the project to go ahead. Should the match funding not be available, the grant from the Community Area Grant Scheme would be withdrawn, and the applicant would be invited to reapply in the new financial year, after further information had been provided.

Reason

The application met the Community Area Grant Criteria for 2009/10 and provided an opportunity for children to be involved in a project which was aimed at teaching them the importance of protecting the environment.

Decision

Ebble Valley Short Mat Bowls Club were awarded £720 towards the purchase of three new bowls carpets.

Reason

The application met the Community Area Grant Criteria for 2009/10 and would provide a useful facility for people in the community of all ages.

Decision

The application from Laverstock Gardening Club was refused.

Reason

There was a lack of community benefit and the applicant had access to sufficient reserve funds.

Decision

Downton Museum and Archive were awarded £890 towards their conservation project of local historical documents.

Reason

The application met the Community Area Grant Criteria for 2009/10 and the project would preserve the local history for generations to come.

It was suggested that the Applicant could produce an inventory, detailing what documents were available, where they were stored and how they could be accessed. The inventory could be kept at the Library for people to view.

The Board also agreed to write a letter to the Library service to ask them to store the archives to enable access by local people.

Decision

The Moot Preservation Trust was awarded £463 towards their project to repair the boundary wall.

Reason

	<p><i>The application met the Community Area Grant Criteria for 2009/10 and the facility was widely used by people of all ages in the community. However the applicant was awarded half of the amount requested on the application form as they had previously received funding from the SWAG scheme.</i></p> <p><u>Decision</u> Clear Way was awarded £1,140 towards their bridleway, footpath and cycleway clearance and surface improvement project.</p> <p><u>Reason</u> <i>The application met the Community Area Grant Criteria for 2009/10 and the facility was widely used by people of all ages in the community.</i></p> <p><u>Decision</u> The Memorial Ground Trust (Whiteparish) was awarded £1,000 towards the purchase of children’s play equipment.</p> <p><u>Reason</u> <i>The application met the Community Area Grant Criteria for 2009/10 and would be of benefit to the children in the community.</i></p> <p>Councillor Randall left the room and did not vote for the application above.</p> <p><u>Decision</u> The application from Downton Football Club was deferred, pending the club’s ability to demonstrate the formation of a youth team from the area.</p> <p><u>Reason</u> <i>At present, only six of the clubs sixty eight players were from the Downton area. The Board felt that the project did not benefit a large enough number of the Downton community and requested further evidence that the club could benefit the community.</i></p>	
5.	<p><u>Close</u></p> <p>The Chairman thanked everyone for coming to the meeting.</p> <p><u>Future Meeting Dates:</u></p> <p>Thursday 15 April 2010, 7.00pm at Winterslow Village Hall Thursday 17 June 2010, 7.00pm at Coombe Bissett Village Hall Thursday 19 August 2010, 7.00pm at Alderbury Village Hall</p>	

Southern Wiltshire Community Area Joint Strategic Needs Assessment

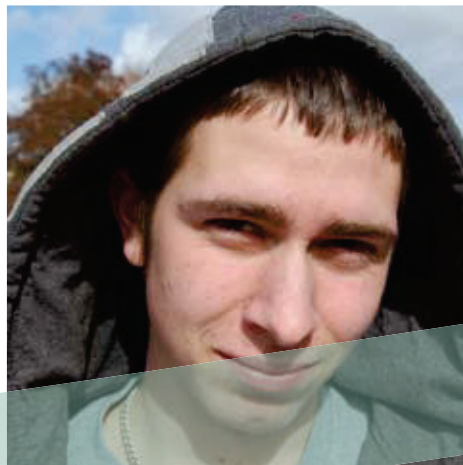
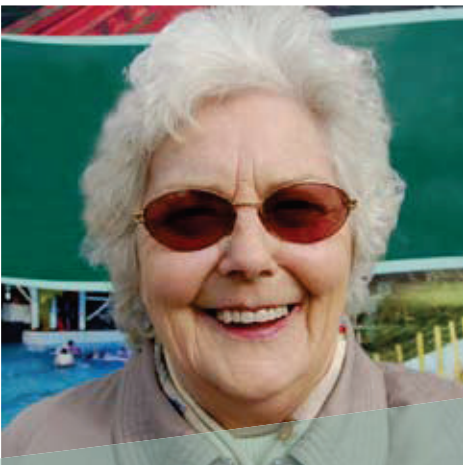


Table of Content

Introduction	3
Summary	4
Map of Southern Wiltshire Community Area	5
Population.....	5
Deprivation	6
Life expectancy	7
Mortality	8
Health and wellbeing indicators	9
Teenage pregnancy	9
Traffic accidents	9
Hospital admissions related to alcohol	10
Childhood obesity	10
Smoking prevalence.....	11
Self-reported health.....	11
Domestic violence	12
Deaths at home.....	12
Other indicators	13
Glossary.....	14

Introduction

In order to plan the right services for the people of Wiltshire, we review the future health care and wellbeing needs of the local population through a process known as the Joint Strategic Needs Assessment (JSNA) each year. This results in a report which describes those needs and transforms data into knowledge and knowledge into wisdom. This informs the strategic direction of service delivery which will help meet those needs. As we prepare this report, we discuss it with local people and their representatives through formal and informal consultation and engagement.

This year, in order to make this engagement more meaningful, we have extended the county-wide JSNA report by producing a series of community-level health profiles. This document covers the Southern Wiltshire Community Area (as at April 2009), and is intended to be part of the overall Southern Wiltshire Community Area Profile.

This document has been produced by NHS Wiltshire in collaboration with Wiltshire Council, with contributions from Wiltshire Police and Dr Foster Intelligence, and using data from the Office for National Statistics (ONS).

Some of the indicators presented in this document use data from small areas or small populations and some use data from a relatively short time period. The impact of natural random variation in these datasets is greater than in larger datasets and this must be taken into account when interpreting data.

For each indicator presented, the 20 Community Areas are ranked from best (ranked 1st), eg lowest proportion of smokers, to worst (ranked 20th), eg the lowest proportion of people self-reporting good or very good health. A glossary of terms and definitions is given at the back of this document.

A full methodology document is available on request from NHS Wiltshire, telephone 01380 733808 or email jsna@wiltshire.nhs.uk.

We welcome your comments or questions about this document. Please email them to jsna@wiltshire.nhs.uk. All of the 20 Community Area Health JSNAs will also be made available on the JSNA website <http://www.wiltshirejsna.org/> and the Wiltshire and Swindon Intelligence Network <http://www.intelligencenetwork.org.uk>.



Summary

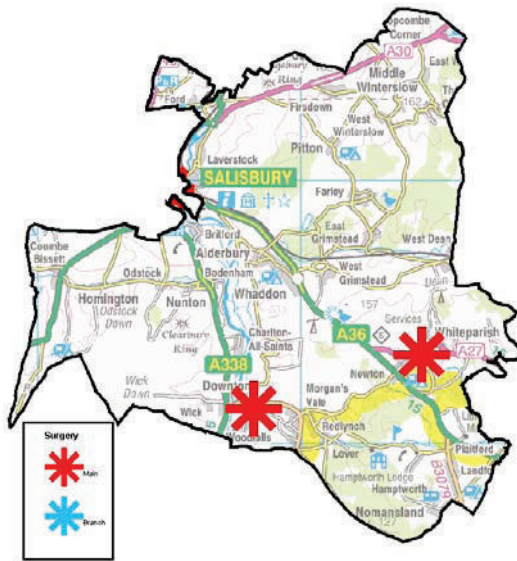
Southern Wiltshire Community Area has a resident population of 20,952 and has two main GP surgeries. In terms of deprivation the Southern Wiltshire Community Area includes one Super Output Area (SOA) that lies within the 20% most deprived SOAs in Wiltshire.

It has the lowest percentage of smokers (13.1%) out of all the Community Areas, much lower than the Wiltshire average of 20.2%. There were fewer deaths at home (as opposed to at a health-care setting) in Southern Wiltshire compared to the Wiltshire average (16.8% compared to 19.9%, respectively).

It compares favourably (ranked 2nd) among the 20 Community Areas for many indicators, including: Disability Living Allowance (low claimant rate), purchasing of fruit, leisure centre attendance, admissions to hospital for fractured neck femur and cancer (low admission rates), breastfeeding (high rates) and children's dental health (few filled, decayed or missing teeth). However, it compares less favourably for alcohol consumption, being at the bottom of the rank (20th); the highest alcohol consumption.



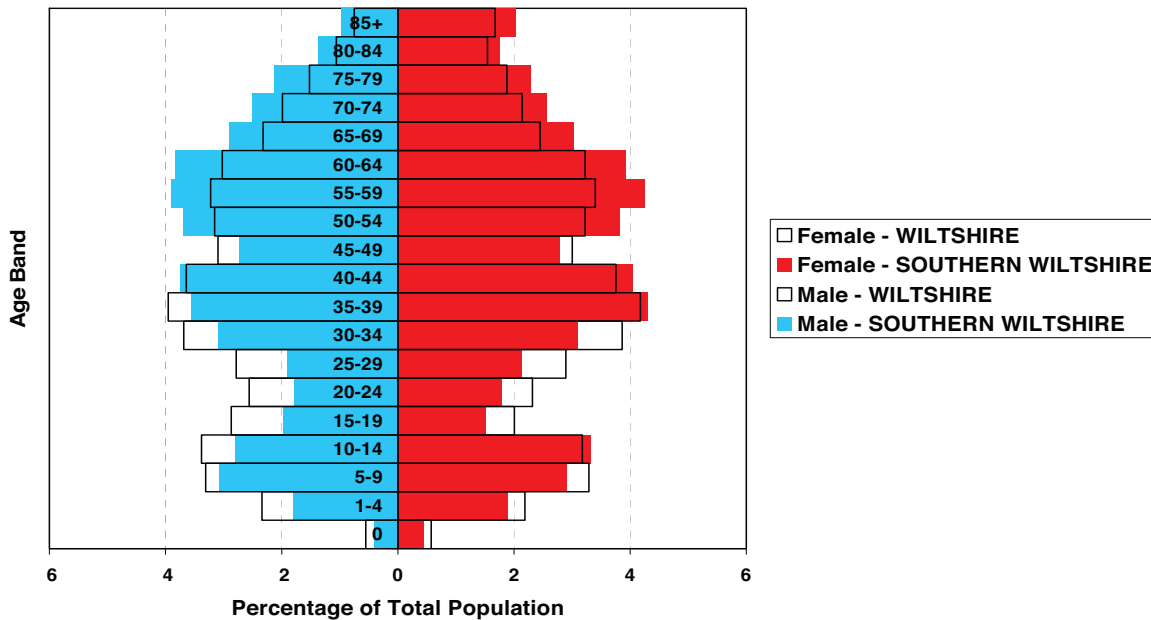
Map of Southern Wiltshire Community Area (with GP surgeries)



© Crown copyright. All Rights Reserved. 10049050 (2009).

Population

Southern Wiltshire Community Area has an overall resident population of 20,952. It has proportionately many more males and females in the 50 and older age groups and many a smaller proportion of population in the younger age bands (under 35) than the Wiltshire averages.

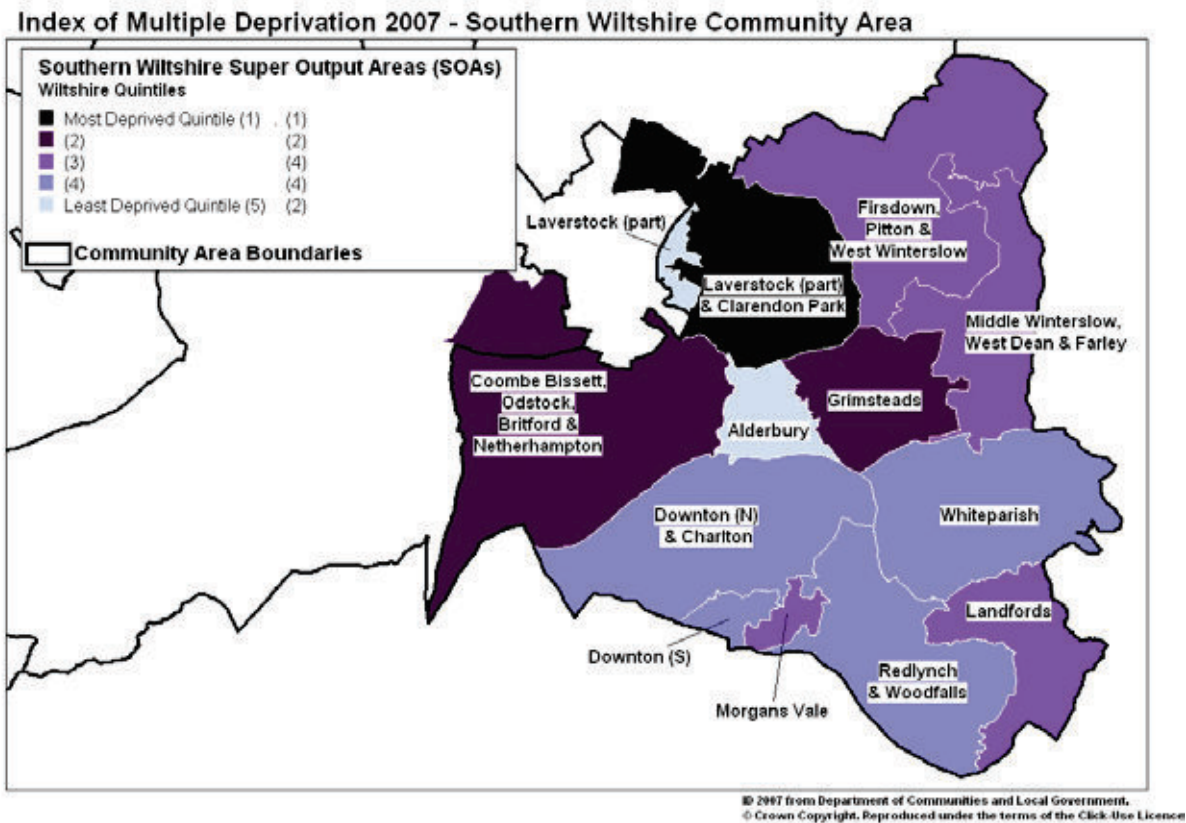


Deprivation

Deprivation is a multi-dimensional concept that focuses on the inability of individuals to play a full part and enjoy full opportunities in the life of their community or society. It is emphasized as lack of financial or material resources, but also social, cultural and political aspects.

The Index of Multiple Deprivation (IMD) 2007 brings together 37 indicators covering specific aspects of deprivation. These aspects include income, employment, health and disability, education, skills and training, barriers to housing and services, living environment and crime. Deprivation is associated with an unmet need in these areas. The IMD provides a comparative ranking of areas of deprivation across England.

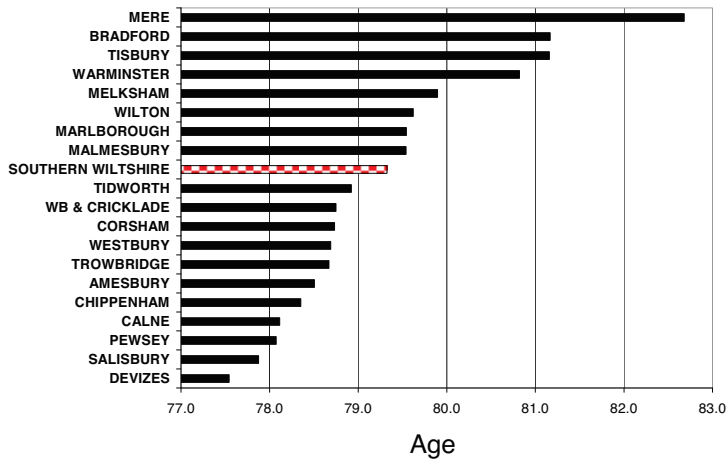
Laverstock (part) and Clarendon Park is the most deprived area in Southern Wiltshire Community Area. Nationally it is in the 3rd most deprived quintile (17,625th most deprived area in England out of 32,482).



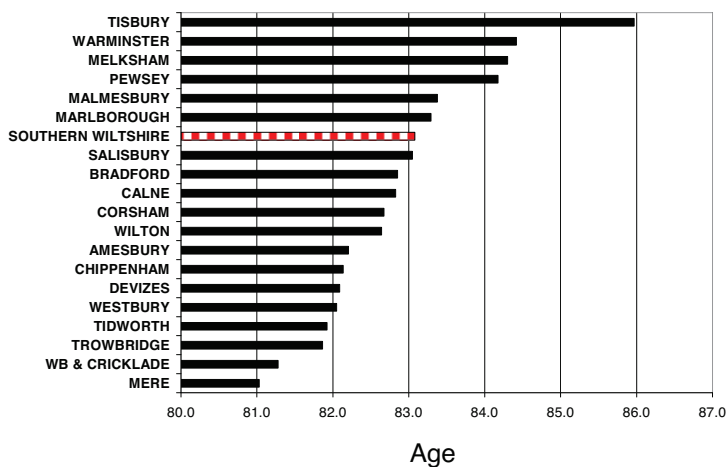
Life expectancy

Life expectancy is a measure of overall health and is useful in highlighting health inequalities between areas. There is a clear gradient in life expectancy between the most and the least deprived wards in Wiltshire a gap of 5.2 years between these two groups.

Males



Females

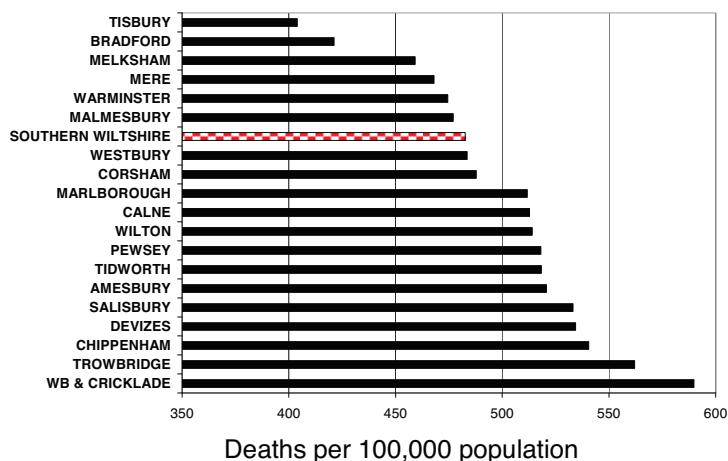


Life expectancy at birth, estimated using data from 2004 to 2006, for males in Southern Wiltshire is 79.3 years and 83.1 years for females. The Wiltshire life expectancy is 79.0 years for males and 82.8 years for females. Southern Wiltshire ranks 9th for males and 7th for females amongst the 20 Community Areas.

Mortality

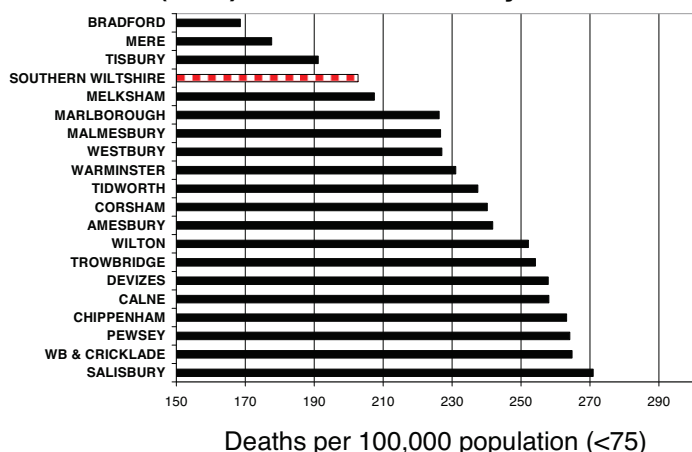
All age all cause mortality

All cause mortality rates (adjusted for age differences between the Community Areas) are a measure of the overall health of a population and together with life expectancy are amongst the most useful indicators in highlighting health inequalities between areas.



There were 483 (of any age, any cause) deaths per 100,000 population between 2004 and 2006 in Southern Wiltshire compared to the Wiltshire average of 508 per 100,000. South Wiltshire ranks 7th out of the 20 Community Areas.

Premature (< 75) all cause mortality

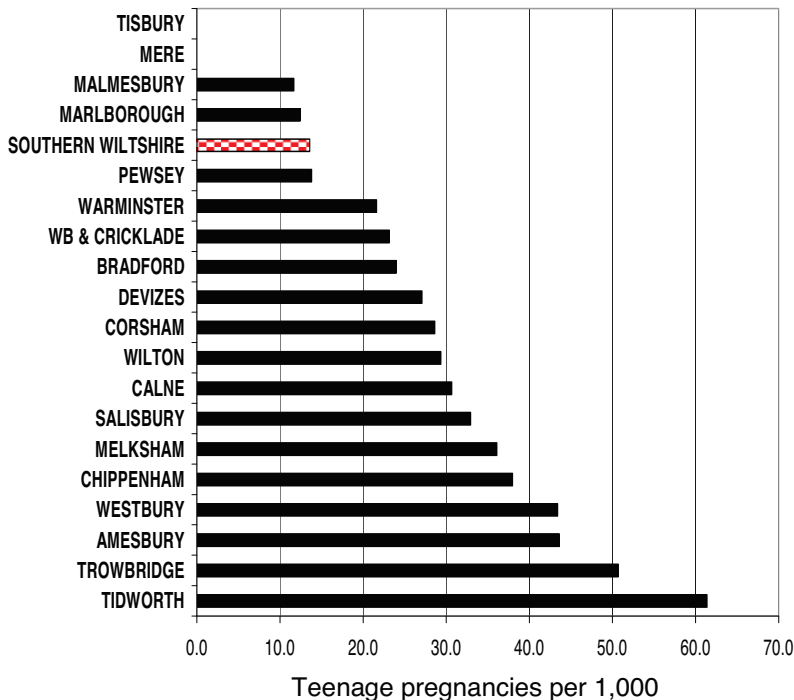


Premature mortality shows us how many and which deaths we can prevent. It is defined as deaths in people younger than 75. There were 203 premature deaths per 100,000 population under 75 between 2004 and 2006 in Southern Wiltshire. This is equivalent to 1 in 1,480 people under 75 dying each year. This compares to the Wiltshire average of 240 per 100,000. Southern Wiltshire ranks 4th out of the 20 Community Areas.

Health and wellbeing indicators

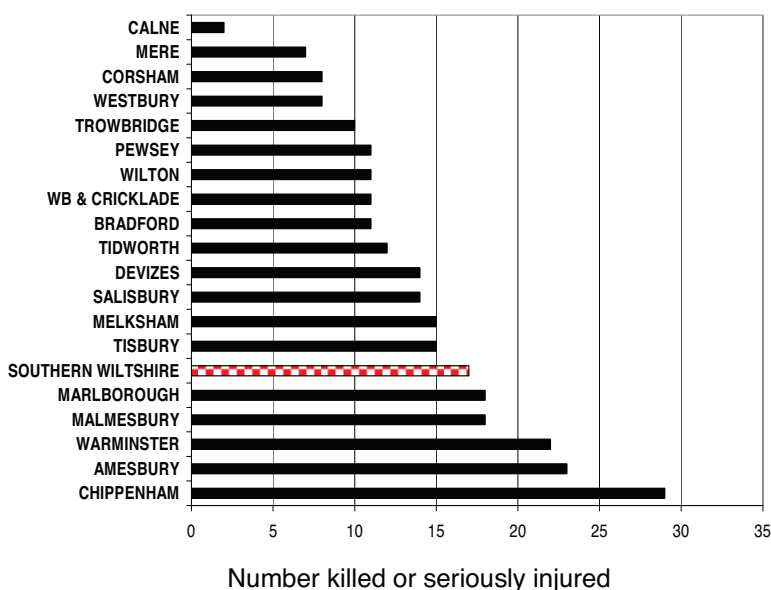
The following indicators are important and need to be addressed with appropriate initiatives in order to improve the health and wellbeing of the local population and reduce inequalities. Further details on inequalities, life-style factors and health and wellbeing are presented in the core JSNA document for Wiltshire 2008/09, which can be viewed on the JSNA website <http://www.wiltshirejsna.org>

Teenage pregnancy



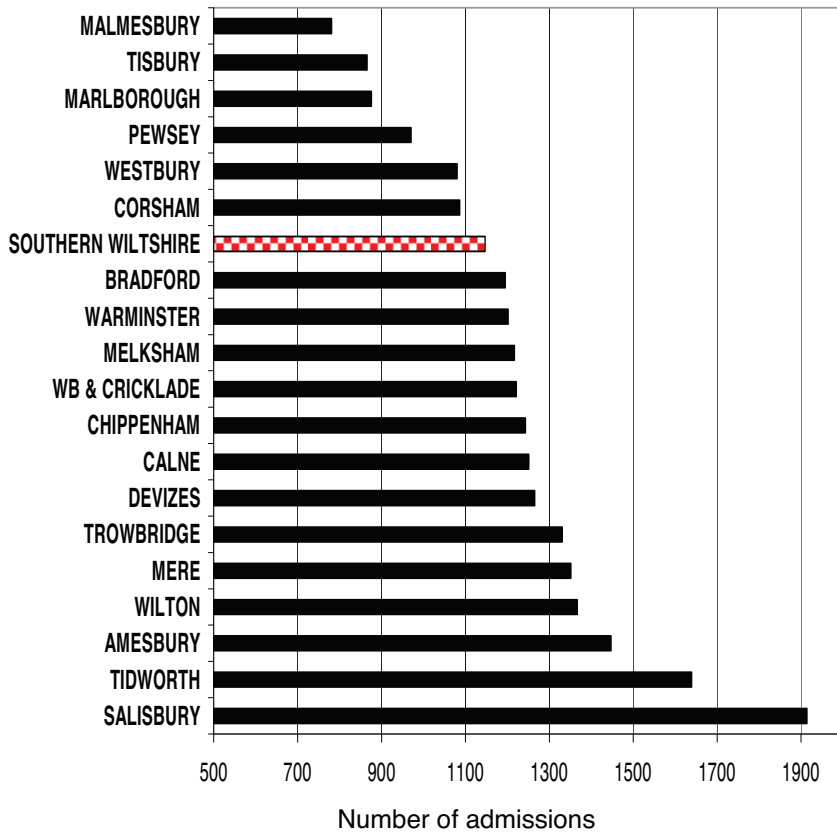
Teenage pregnancy is associated with significant health and wellbeing problems for the mother-to-be and the child. Based on 2007/08 and 2008/09 data there were 13.6 per 1,000 pregnancies in girls aged under 18 in Southern Wiltshire. This equates to 1 in 74 girls between 15 and 17 becoming pregnant. The Wiltshire average is 31.9 per 1,000. Southern Wiltshire ranks 3rd out of 18 Community Areas. Small numbers and hence confidentiality issues, mean we are not able to show the data for Mere and Tisbury.

Traffic accidents



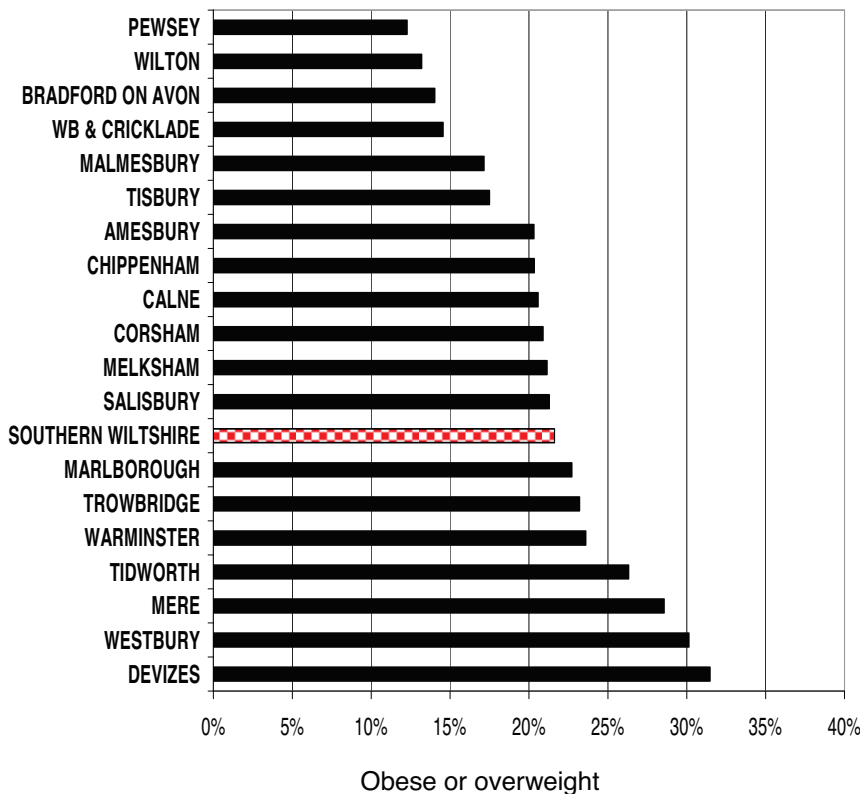
There were 17 people killed or seriously injured on roads in Southern Wiltshire in 2008 according to data from Wiltshire Police. This compares unfavourably to an average of 13.8 per Community Area in Wiltshire overall. Southern Wiltshire ranks 15th out of the 20 Community Areas. When comparing areas the volume of traffic and type of roads in each area should be taken into account.

Hospital admissions related to alcohol



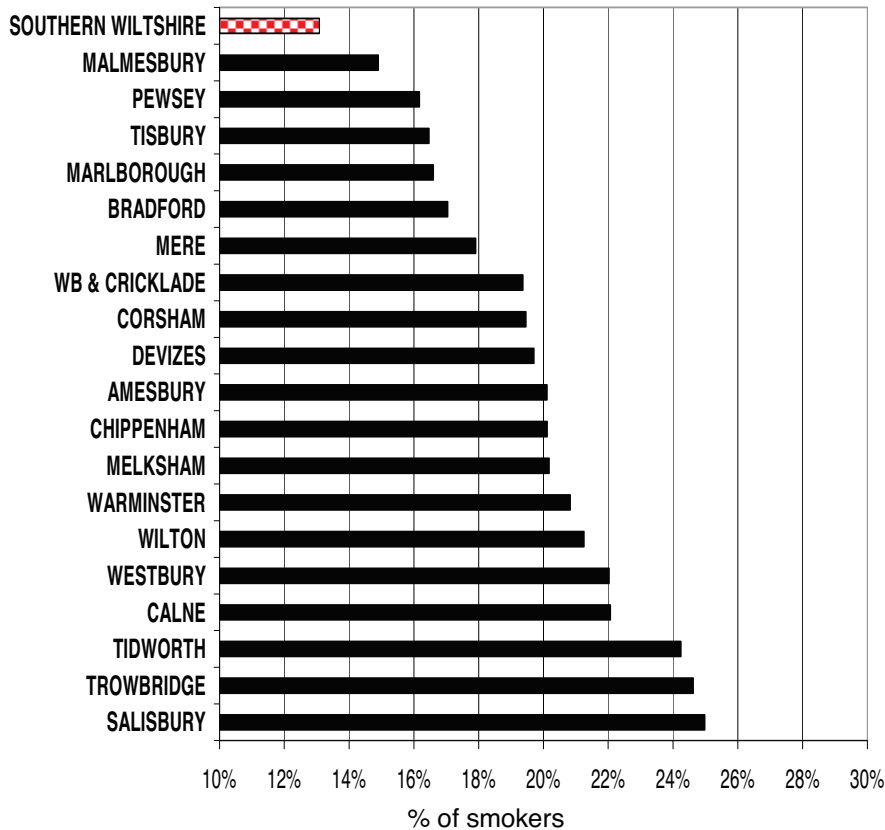
Alcohol misuse is associated with significant health, wellbeing and social problems. After taking account of its age profile, there were 1,147 hospital inpatient admissions per 100,000 people in Southern Wiltshire between May 2008 and April 2009 that were due to alcohol-related causes. This is much lower than the Wiltshire average of 1,324 and is equivalent to one admission per 87 people. Southern Wiltshire ranks 7th out of 20 Community Areas.

Childhood obesity



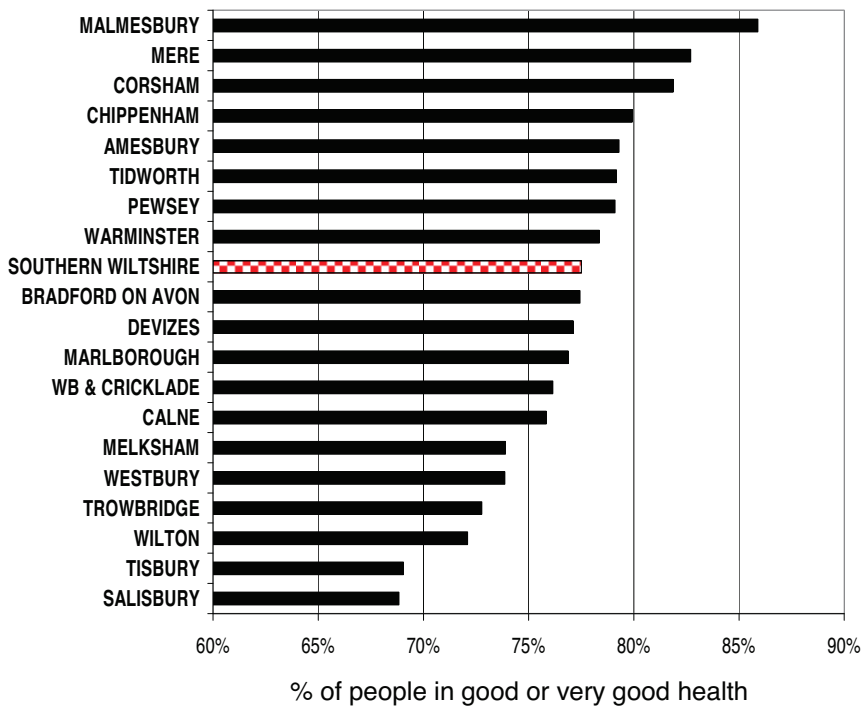
Obesity in childhood leads to serious health problems in adulthood and premature mortality. Children in the school reception year (aged 4 to 5 years) had their heights and weights measured in 2007/08. Just over 1 in 5 (21.6%) of the children measured in Southern Wiltshire were found to be overweight or obese compared to an average of 21.8% in Wiltshire. Southern Wiltshire ranks 13th out of 20 Areas.

Smoking prevalence



Smoking is strongly linked to many causes of premature mortality, such as many cancers and cardio-vascular diseases. The percentage of the total population who smoke has been estimated using 2006 survey data and local population and deprivation information. These estimates show that 13.1% of people in Southern Wiltshire smoke; lower than the Wiltshire average of 20.2% and Southern Wiltshire ranks 1st out of 20 Areas.

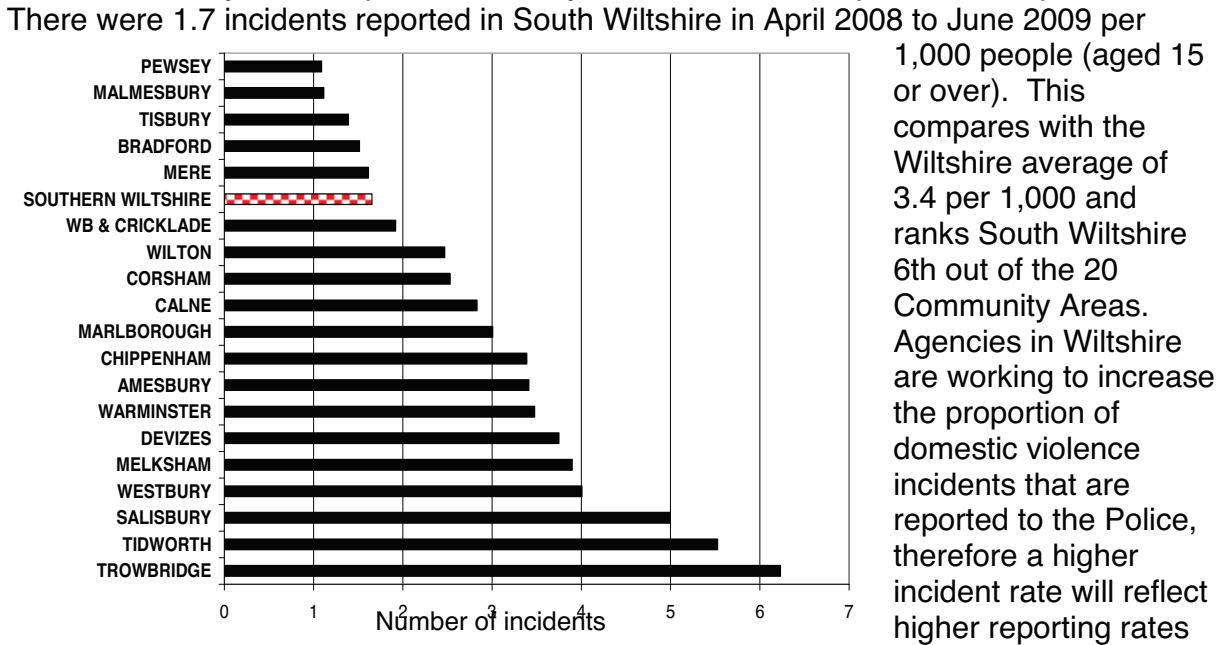
Self-reported health



Respondents to the 2008 Wiltshire Place and Household surveys were asked how good their health was in general. The percentage of people saying they were in good or very good health in Southern Wiltshire was 77.5%; similar to the Wiltshire average of 76.8%. Southern Wiltshire ranks 9th out of 20 Community Areas.

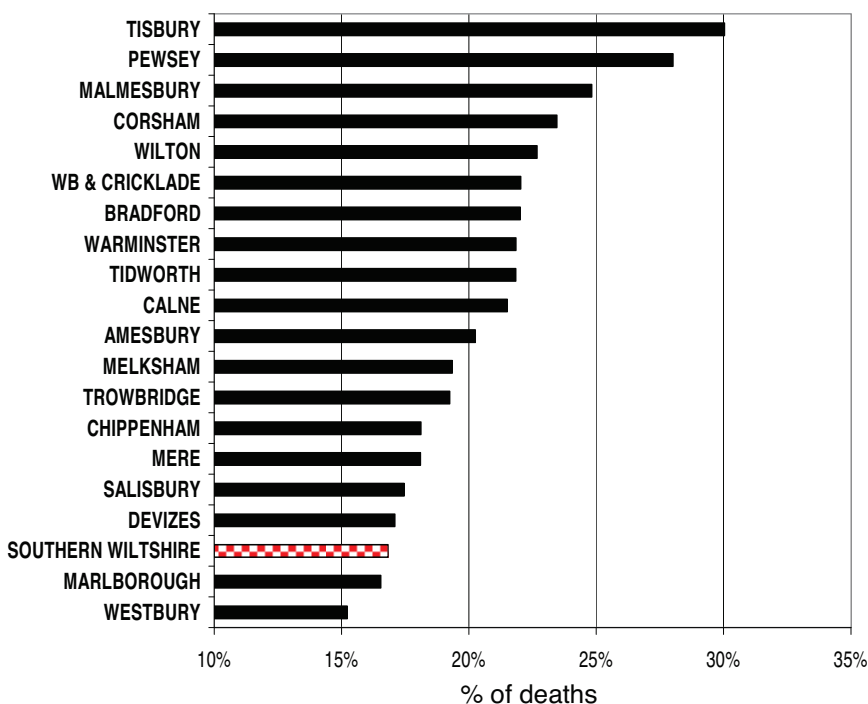
Domestic violence

Wiltshire Police record a range of domestic violence related incidents that involve violence against the person or sexual assault. It is nationally recognised that domestic violence is vastly under reported with only 20% of incidents reported to the police.



as well as higher prevalence. Anyone wishing to seek help and advice on domestic violence issues can contact the National 24hr Domestic Violence Helpline on 0808 200 0247, the Men's Advice Line and Enquiries (MALE) on 0808 801 0327, or log on to www.speakoutwiltshire.com.

Deaths at home



Being able to choose where to die is important. Nationally 64% of people say they would wish to die at home. In Wiltshire we are following the national strategy to support people in their home at the end of their lives. In Southern Wiltshire 16.8% of deaths occurred at home (2004 to 2006). This compares to the Wiltshire average of 19.9%. South Wiltshire ranks 18th out of the 20 Community Areas.

Other indicators

The indicators presented below provide more information on the health and wellbeing of the local population for the Community Area. For each of them the percentage or prevalence in the local population is compared to the Wiltshire average (and the highest and lowest Community Area figures). The last column presents the ranking of the Community Area in the County, where 1 is the best rank and 20 the worst rank.

Indicator Footnote	SOUTHERN WILTSHIRE CA Value	SOUTHERN WILTSHIRE CA Rate*	Lowest rate	Wiltshire Average Rate	Highest rate	CA Rank (out of 20)
Long-standing illness, disability or infirmity¹ Source: Wiltshire Council. % self-reporting "Yes" on 2008 Place Survey (unstandardised)	66	33.3	23.5	32.4	41.5	10
Chlamydia Screening² Source: NHS Wiltshire Screening Programme. Screens per 1,000 15-24 population 2007/08	168	79.3	27.3	91.0	215.9	10
Child Wellbeing Index 2009^{number} Source: DCLG. Lower score indicates a higher level of well being		69.7	56.5	79.8	126.0	7
Disability Living Allowance claimants² Source: DWP. Crude rate per 1,000 population	484	22.0	21.2	32.4	42.8	2
Alcohol consumption¹ Source: Experian Target Group Index survey. % of people reporting that they have an alcoholic drink every day	3628	16.5	9.5	13.7	16.5	20
Purchasing of fruit¹ Source: Experian Target Group Index survey. % of people reporting that they did NOT spend £2 on fruit in the week previous to the survey	976	4.4	4.2	6.5	9.3	2
Exercise - leisure centre attendance¹ Source: Experian Target Group Index survey. % of people reporting that they have NOT visited a leisure centre in the last 12 months	11988	54.4	54.0	62.0	71.4	2
Fractured Neck of Femur - Hospital Admissions³ 2007/08. Hospital Episode Statistics (Inpatient Admissions) by Primary Diagnosis. Directly standardised rates (by age) per 100,000 population. ICD10 S72	21	36.4	30.5	75.7	121.3	2
Stroke - Hospital Admissions³ 2007/08. Hospital Episode Statistics (Inpatient Admissions) by Primary Diagnosis. Directly standardised rates (by age) per 100,000 population. ICD10 I60-I69	35	90.8	60.9	111.4	182.6	6
Chronic Obstructive Pulmonary Disease - Hospital Admissions³ 2007/08. Hospital Episode Statistics (Inpatient Admissions) by Primary Diagnosis. Directly standardised rates (by age) per 100,000 population. ICD10 J40-J44	28	77.5	45.3	96.0	184.5	4
Asthma - Hospital Admissions³ 2007/08. Hospital Episode Statistics (Inpatient Admissions) by Primary Diagnosis. Directly standardised rates (by age) per 100,000 population. ICD10 J45-J46	17	83.6	11.7	97.1	172.7	8
Coronary Heart Disease (CHD) - Hospital Admissions³ 2007/08. Hospital Episode Statistics (Inpatient Admissions) by Primary Diagnosis. Directly standardised rates (by age) per 100,000 population. ICD10 I20-I25	93	250.5	186.5	302.6	419.5	5
Diabetes - Hospital Admissions³ 2007/08. Hospital Episode Statistics (Inpatient Admissions) by Primary Diagnosis. Directly standardised rates (by age) per 100,000 population. ICD10 E10-E14	12	36.0	22.0	58.4	102.9	5
Cancer - Hospital Admissions³ 2007/08. Hospital Episode Statistics (Inpatient Admissions) by Primary Diagnosis. Directly standardised rates (by age) per 100,000 population. ICD10 C00-C97	491	1550.0	1381.4	1958.4	4015.0	2
Falls - Hospital Admissions³ 2007/08. Hospital Episode Statistics (Inpatient Admissions) by Primary Diagnosis. Directly standardised rates (by age) per 100,000 population. ICD10 W00-W19	109	356.0	290.7	392.1	452.4	7
Mortality from Circulatory Disease (CVD)³ 2004-06 mortality data. Directly standardised rates (by age) per 100,000 population. ICD10 I00-I99	290	174.6	146.0	171.1	207.0	14
Mortality from Cancer³ 2004-06 mortality data. Directly standardised rates (by age) per 100,000 population. ICD10 C00-C97	167	133.2	110.7	153.5	176.1	5
Breastfeeding¹ Source: NHS Wiltshire. % of mothers breastfeeding (partially or completely) at 6 to 8 weeks. 2008/09 data	83	53.9	15.0	35.5	57.2	2
Dental Health - children^{number} Average number of fillings, decayed or missing teeth per child aged 5 surveyed. Modelled from 2005/06 Dental Health Survey data		0.1	0.0	1.6	3.4	2

¹ %, ² per 1,000, ³ per 100,000

Glossary

All age all cause mortality	Deaths from any cause at any age.
BMI	Body mass index
CHD	Coronary heart disease
Commissioning	A continuous cycle of activities that contribute to the securing of services, including the specification of services to be delivered, contract negotiations, target setting, monitoring and managing performance.
Community Area	20 local administrative areas of Wiltshire based on research into local communities and normally centred around a local town.
Community Area Board	18 formally constituted arms of Wiltshire Council with delegated authority to act as a local executive of the Council. The Boards consist of elected Council members and representatives from health, police, fire and other organizations. All Boards apart from South West Wiltshire are co-terminous with Area Partnerships.
Community Area Partnership	20 key local bodies to act as the co-ordinated voice of the community with representation from town and parish councils, local business, the voluntary sector, local people and community leaders. The partnerships carry out consultations, debate local issues and prioritise community needs in Community Area Plans.
COPD	Chronic obstructive pulmonary disease
CVD	Cardio-vascular disease
DCLG	Department for Communities and Local Government
DH/DoH	Department of Health
Dr Foster Intelligence	A public-private partnership between the NHS Information Centre (a special health authority of the NHS) and Dr Foster, a commercial provider of healthcare information.
IMD	Index of Multiple Deprivation
Life expectancy at birth	Life expectancy at birth is an estimate of the average number of years a new-born baby would survive if they experienced the particular area's age-specific mortality rates for the time period under consideration throughout their life. The figure reflects mortality among those living in the area in each time period, rather than mortality among those born in each area.
NHS Wiltshire	New name for Wiltshire PCT
Obese (child)	Above the 98 th percentile when compared with the UK 1990 growth chart for age and gender of the child.
ONS	Office for National Statistics
Overweight (child)	Between the 91 st and 98 th percentile when compared with the UK 1990 growth chart for age and gender of the child.
SOA	Super Output Area: nationally defined geographical area for use in small area statistics containing 1,000 to 2,000 people.
Wiltshire Council	Unitary council formed 1 st April 2009.

Report to	Southern Wiltshire Area Board
Title of Report	Community Issues Update– Area Board Meeting 15 April 2010

Purpose of Report

To update the board on the issues received, progressed and closed since the last meeting in February 2010.

1. Overview of the issues received on the online system:

Issues in progress -

ID	Category	Area	Summary of Issue	Submitted
827	Youth	Old Sarum	Transport to Bluz & Zuz disco for the young people of Old Sarum is not provided	11/03/2010
741	Highways	Clarendon Park	Crossing of A36 at Clarendon/Petersfinger	11/02/2010
706	Environment	Southern Wiltshire	Environmental initiatives and how they feed into the area board	04/02/2010
703	Schools	Old Sarum	Primary school in Old Sarum	04/02/2010
662	Schools	Old Sarum	Primary school in Old Sarum	22/12/2009
651	Schools	Old Sarum	Primary school in Old Sarum	13/12/2009
584	Highways	Pitton	Water run-off from The Whiteway Pitton	19/11/2009
583	Highways	Alderbury	Manhole covers left on side of the road at the road known as Southway in Alderbury	19/11/2009
581	Highways	Ford	Ford had been promised a single line through the village as an invisible pavement for pedestrians walking along the Roman road	18/11/2009
547	Environment	Pitton	Lack of cleaning of the siphon in the High Street, Pitton	09/11/2009
404	Transport	Laverstock	Eliminating School Traffic From Laverstock Three secondary schools and one village primary school	14/10/2009
402	Highways	Southern Wiltshire	A338 Between Salisbury & Downton. Speed of traffic and continual accidents	14/10/2009
247	Speedwatch	Ford	Speeding in Ford -I would like to volunteer to have a community speed watch	17/09/2009
123	Community Safety	Downton	Establishment of police point in Downton Library (from police presence issue)	11/09/2009
116	Transport	Whiteparish	Speeding on A27	11/09/2009

Recently Closed Issues -

ID	Category	Division	Summary of Issue	Submitted
781	Planning	Southern Wiltshire	Village Design Statements (VDS). No official assistance or advice	23/02/2010
753	Highways	Winterslow	Break up of and extreme pot-holes in roads in and around Winterslow	17/02/2010
738	Highways	Ford	Flooding along Ford Farm lane opposite the Boswell site has been ongoing for years. This has been re	10/02/2010
717	Transport	Landford & Redlynch	Wilts and Dorset buses are withdrawing their X7 bus service from Nomansland crossroads and Landford	08/02/2010
704	Highways	Ford	Ford Lane, Ford: Road Traffic Incidents, Flooding, Speeding, Drainage and Road Surfacing. A large	04/02/2010
606	Highways	Alderbury	Request for a Community Speed Watch on Southampton Road and Claredon Road Exact locations: Southamp	29/11/2009
550	Highways	Morgan's Vale	Appalling parking on the junction of Appletree Road/Downton Hill in Morgans Vale. Junction is blind	10/11/2009

Where there seem to be problems of inactivity on particular issues the board can press for action. We encourage that you take control of your issues and seek updates if they are not forthcoming. Many issues require a partnership approach to tackle them and we encourage small focused meeting to look at solutions to the issues raised. Not all issues can be resolved but we can work together to see how issues can be addressed. By nature, some issues are more difficult to address than others.

All updates are available online at www.wiltshire.gov.uk/southernwiltshireareaboard, then click on issue tracking. If you would like to be sent hard copied of the issues and updates contact Tom Bray on tom.bray@wiltshire.gov.uk or 01722 434252.

2. Updates for the above issues:

A verbal report will be given at the meeting.

Tom Bray, Community Area Manager
01722 434252
tom.bray@wiltshire.gov.uk

Report to	Southern Wiltshire Area Board
Title of Report	Community Area Grants – Area Board Meeting 15 April 2010

Purpose of Report

To request that Councillors consider 3 applications seeking 2010/11 Community Area Grant Funding.

1. Application: Morning Star (Salisbury) – gardening equipment for projects engaging homeless/unemployed to benefit local people

Applicant	Project proposal	Funding requested
Morning Star (Salisbury)	Projects engaging homeless/unemployed to benefit local people	£4,741

- 1.1 The full application is attached
- 1.2 The application meets grant criteria 2010/11.
- 1.3 The application does not demonstrate direct links to the Community Plan.
- 1.4 The application does meet Wiltshire Council priorities through concentrating on lives not services and building more resilient communities.
- 1.5 Summary details about the applicant:

Morning Star (Salisbury) is a charity that works with homeless people and people with substance abuse problems. The charity runs the New Life Centre in Winterslow, which is a six bedroom house, with a caravan providing extra bed spaces and is set in approximately 1.2 acres of land.

They offer (amongst other things which can be found on their website - <http://www.morningstarsalisbury.org/>):

Residential Program:

There are 4 places available for the Residential program, which runs for a minimum of 6 months, with the option for people to stay on longer if circumstances necessitate. The residential project provides:

- a) Help, support & advice to set up relevant benefits.
- b) A home for those who are homeless
- c) 24 hour intensive support in a family orientated unit for the first stage of the program
- d) Support in setting and attending relevant appointments with other local

agencies.

e) Help and advice in the area of debt counselling & Support with all Life Skills

f) Help and advice in areas such as nutrition and healthy eating and cooking.

g) A therapeutic environment, promoting opportunities for clients to look at and deal with pivotal issues in their lives with the help, support and encouragement of staff.

h) Informal work situation (unpaid) enabling and promoting work disciplines and ethos, character development, relational development, social skills, positive attitude, trustworthiness, self esteem, concern for others and a sense of responsibility.

i) Resettlement support, to obtain accommodation in the community at the end of the program, with the option to continue at the project on a daily basis.

1.6 Summary details about the project:

The grant will fund a heavy duty shed, braked trailer, tow hitch and a 15” chainsaw (for which training costs will be covered by the charity and training will be undertaken at Sparsholt College).

This charity is based in Winterslow but its clients, people who are homeless or addressing substance misuse who have intensive support needs, can come from outside the community area.

The clients of the project provide a gardening service which benefits the people of Winterslow.

Winterslow Parish Council – The Parish Councillors have looked at the application and are aware of the project in the community and wish to support the grant application. The group is based in Winterslow and sell produce to raise funds as well as many other activities which help to support the local community. The Parish Council support the grant application as the group helps many local people and brings the community together.

With regard to the funding, the charity’s accounts show a large sum of £64,439 in reserve. Around £32K is restricted and the remaining £32K is for running costs which covers their entire work programme.

Matters to consider:

- *Wider community benefit*
- *Link with the Salisbury City Area and other areas in south Wiltshire for funds as client group will not always be from Southern Wiltshire Area.*

1.7 What will happen if the Area Board makes a decision not to fund the project?

Bev Kidley of Morning Star states: “The project will not go ahead without funding from you. We see the grant as pump-priming the project, and we will be seeking additional funds to develop and sustain the project. We envisage that your local commitment to the project will assist us in securing funding from elsewhere, so maximising your investment. “

Recommendation:

This meets the grant criteria – decision pending members' discussion

2. Application: Alderbury Pre-School – Storage for equipment of disabled pupil

Applicant	Project proposal	Funding requested
Alderbury Pre-School	Storage for equipment of disabled pupil	£990.25

- 2.1 The full application is attached
- 2.2 The application meets grant criteria 20010/11.
- 2.3 The application does not demonstrate tangible links to the Community Plan.
- 2.4 The application does not meet Wiltshire Council priorities.
- 2.5 Summary details about the applicant:

Alderbury Pre-School.

- 2.6 Summary details about the project:

The project is to provide storage facilities for equipment used by a disabled pupil. The equipment will remain with the school and in this storage facility when the disabled pupil moves on in 2012. Currently the equipment uses up space inside the pre-school taking up space used by the 55 pre-school children and 50 primary school children.

The grants criteria states that boards should not fund projects which benefit individuals, however for this grant it can be justified that the storage facility will give the school better facilities to provide local schooling for all children and also improve the space available within the school for all pupils.

However, the extent of community benefit here is difficult to quantify. The pre-school is looking to improve its facilities for disabled children and the storage facility would greatly improve the pre-school's access to funding for actual equipment as the lack of storage currently acts as a barrier to this.

Alderbury Parish Council- comments will be received at the meeting.

See attached subsequent email from applicant

Matters to consider:

- *Wider community benefit*
- *Sustainability – numbers of children benefiting from the grant.*

- 2.7 What will happen if the Area Board makes a decision not to fund the project?

The pre-school will continue to fundraise but envisage that it will take 3 years, by which time the pupil in question will have left the school.

Recommendation:

This meets the grant criteria – decision pending members' discussion

3. Application: Downton Diamonds Netball Club – Netball Equipment for start up

Applicant	Project proposal	Funding requested
Downton Diamonds Netball Club	Netball Equipment for start up	£843

- 3.1 The full application is attached
- 3.2 The application meets grant criteria 20010/11.
- 3.3 The application demonstrates a link to the Community Plan through access to leisure activities for a wide range of age groups.
- 3.4 The application does not directly meet Wiltshire Council priorities.
- 3.5 Summary details about the applicant:
Downton Diamonds is a newly established netball club in the Downton area offering a community based local club open to all the surrounding areas.
- 3.6 Summary details about the project:

The grant will provide funds for the start up of the local club which has been informally operating for about 18 months using borrowed equipment from coaches. The start up will allow them to formalise the playing arrangements and enter competitive leagues offering a more structured experience for its members.

Lousie Cary, Sports and Physical Activity Development Manager at Wiltshire Council:

“The Netball club provides the opportunity for women in the Downton area and surrounding villages to participate in recreational and competitive netball on a weekly basis. This supports the LAA NI8 target for adult participation in sport. The group also offers the opportunity for the women to develop their leadership skills, with one participant taking their level 2 coaching qualification and 2 others taking their umpiring qualifications. The club was originally supported by Wiltshire Council's Sports and Health Development team, but the women now want to develop the informal group into a formal netball club, which will be led by the women themselves, thereby making the group fully sustainable.”

She also confirms that the costs associated with the application are realistic. At the moment they are borrowing kit and equipment from a netball coach, but in order to develop the club in a positive way they need to be able to provide their own kit for training and matches. To enter the summer league this year they have to have their own team kit, which are the rules set out by Salisbury Netball Association.

Downton Parish Council is fully supportive of the application by Downton Diamonds Netball Team. The Parish Council's response was very positive to the news that the Club was intending to set up a youth division in the

future and that it had already encouraged women from Downton and nearby villages to take up netball again. It wishes the club every success.

- 3.7 What will happen if the Area Board makes a decision not to fund the project?
If they are not successful with this bid then they would have to source other funding streams.

Recommendation:

Grant in full from 10/11 budget

Budget Update:

Funding for 10/11: £41,087 plus £628 brought forward from 09/10 equals **£41,715**.
Funding already allocated from 2010/11 at March 15 extraordinary meeting: **£2,140**
Remaining budget (2010/11) is **£39,575**

SOUTHERN WILTSHIRE AREA BOARD - Forward Plan 2010/11

Item No. 13

Please note: this is a working document which is subject to change due to availability of relevant Officers/Partners and relevant time scales.

Date	Cabinet Member Attending	Location	Area Board Agenda Main Items	Other events (provisional)
15 April 2010	Cllr John Brady	Winterslow Village Hall	<ul style="list-style-type: none"> • Feedback from Health Fair • First Responders • Police Protective Services Presentation • Neighbourhood Watch • Rural Transport • Community Plan Steering Group Update <p>Briefing papers also attached to the agenda:</p> <ul style="list-style-type: none"> • Special Educational Needs (SEN) • Youth Worker Staffing allocations • Contaminated Land Strategy for Wiltshire • Air Quality Strategy for Wiltshire <p>Standard items including Partner and / or Parish Council Updates, Local Issues and Community Area Grants.</p>	
17 June 2010	Cllr Dick Tonge	Coombe Bissett Village Hall	<ul style="list-style-type: none"> • Fire and Rescue Service Item • Appointments to Outside Bodies • Community Plan Steering Group Consultation • LTP Scheme Funding Allocation • Review of Library Services 	<p>Out of Hours NHS Service</p> <p>Results of Community</p>

			<ul style="list-style-type: none"> • Parking Strategy Consultation <p>Standard items including Partner and / or Parish Council Updates, Local Issues and Community Area Grants.</p>	Flooding Consultation
19 August 2010	Cllr Fleur de Rhe-Philippe	Alderbury Village Hall	<ul style="list-style-type: none"> • Caring Villages <p>Standard items including Partner and / or Parish Council Updates, Local Issues and Community Area Grants.</p>	Consultation on Waste sites
14 October 2010	Cllr Toby Sturgis		<ul style="list-style-type: none"> • Housing • Leisure Review • Gypsy and Traveller Site Consultation <p>Standard items including Partner and / or Parish Council Updates, Local Issues and Community Area Grants.</p>	Standards Committee Presentation
16 December 2010	Cllr Stuart Wheeler		<ul style="list-style-type: none"> • Budget Consultation • Matters Arising <p>Standard items including Partner and / or Parish Council Updates, Local Issues and Community Area Grants.</p>	
3 February 2011	Cllr John Thomson		<ul style="list-style-type: none"> • Matters Arising <p>Standard items including Partner and / or Parish Council Updates, Local Issues and Community Area Grants.</p>	

Community area manager: Tom Bray (tom.bray@wiltshire.gov.uk)
Democratic services officer: Lisa Moore (lisa.moore@wiltshire.gov.uk)
Service director: Tracy Carter (tracy.carter@wiltshire.gov.uk)